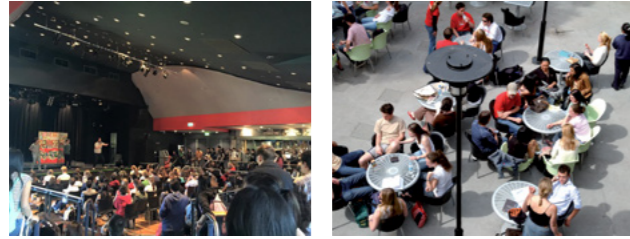


## Stop 10

### Manning House

Manning House – which has the best beer on campus – offers a whole host of food as well as being the Access Centre for all University Student Union related questions.

The Manning Bar, on the top floor of Manning House, not only offers a great way to unwind after class with friends but also plays host to some of the University's great parties, including the start and end-of-semester parties, O-Week and Verge festival parties, and the USU Band Competition.



## Stop 11

### Arena Sports Centre

The Arena Sports Centre contains a gym, the Ledge Climbing Wall, Squash Courts, Sports Clinic and Ralph's Café. You may want to take a break to have some nice coffee and food before continuing with your tour.



## Stop 12

### Charles Perkins Centre

The research and education hub of the Charles Perkins Centre is a 49,500 square metre state-of-the-art building designed to support collaboration and new ways of thinking. The hub will play a key role in fostering collaboration and multidisciplinary research, creating a research and education precinct.



## Stop 13

### Wesley College, the Women's College, St Paul's College & St Andrew's College

There are six residential colleges on campus, including Sancta Sophia and St John's Colleges which are located near the RPA. Between them, these Colleges provide a strong intercollegiate community in the areas of sport (Rawson and Rosebowl), Fine Arts (Palladian Cup) and public speaking (Intercollege Orator) among others.



## Stop 14

### Sydney University Village (SUV)

SUV is on the University's Camperdown Campus, so it's just a short walk to lectures as well as being right in the heart of Newtown. In the Village itself, there are plenty of activities to keep residents entertained, informed and healthy. The Village social life is very active, with BBQ lunches, trivia and open-mic nights. Residents can participate in courses on how to survive university, finances and budgeting, or take part in the 'safe streets' program.



These are, of course, only a few of the many great things to see around The University of Sydney Campus. Please feel free to wander around and discover what the University has to offer.

For further information about the University, including information about our courses, fees, application procedures and all your other needs please visit our website: [sydney.edu.au](http://sydney.edu.au)



THE UNIVERSITY OF  
**SYDNEY**

Camperdown and Darlington Campuses

**Get to know us**  
**Self guided tour**

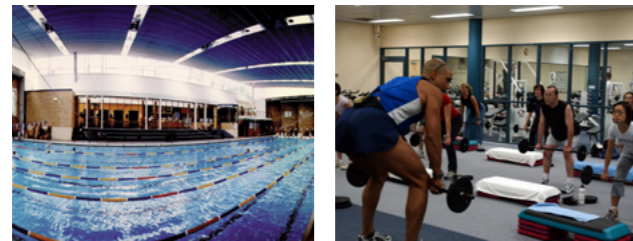
[sydney.edu.au](http://sydney.edu.au)

Welcome to the campus of Australia's first university. As you will discover, the University is always busy with students and staff going to and from classes, visiting the library, relaxing on the front lawns or having a drink with friends at Manning Bar. With the number of buildings and interesting things to see on campus, we have had to pick only a few to focus on, but please feel free to roam around the campus at your leisure. You've got your map, you've got your guide, away you go.

### Stop 01

#### University sports & Aquatic Centre

The Aquatic Centre has a wide range of facilities including a heated indoor swimming pool, squash courts, tennis courts, group fitness studios, health assessments and a gym stocked with modern equipment. It is a great place to get fit- pack some running shoes in with your textbooks and drop in after class for a quick gym session or an intense, enjoyable group workout.



### Stop 02

#### Economics & Business and Merewether Buildings

The Merewether Building and the Economics and Business Building are where the vast majority of the Sydney University Business School staff and facilities are based. Lecturers' and tutors' offices are located all around the Merewether Building where students can visit their lecturers during consultation times. The Economics and

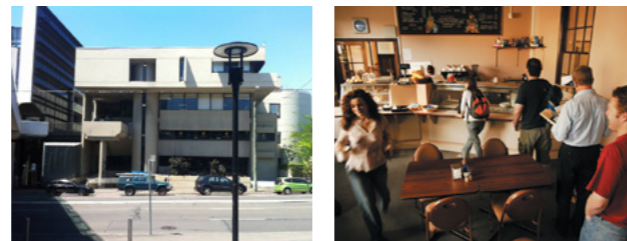
Business Student Information Office is also located in Merewether, where students go for any faculty-related questions.



### Stop 03

#### Wentworth Building

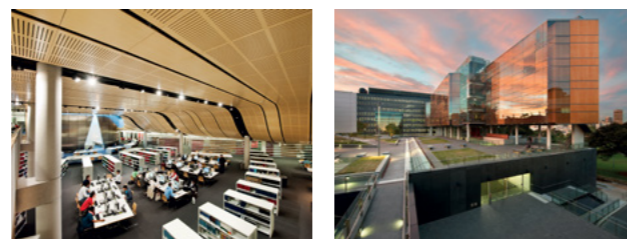
This is where the Student Representative Council (SRC) is located, along with numerous food outlets, the University Health Centre, the International Student Lounge, a Pharmacy, Dentist, Optometrist, the Campus Store, STA Travel Agent and the SRC Bookstore. There are many different opinions among students about where the best coffee is - why not try a number of places in Wentworth and decide for yourself. You will also find copies of student publications The Bull and Honi Soit scattered around. Take the time to read what our students produce on a weekly basis. Grab a coffee, a copy of Honi Soit and go and sit outside on the lawns behind the Wentworth building.



### Stop 04

#### Eastern Avenue Auditorium & The Law Building

The Eastern Avenue Complex is one of the largest lecture theatres on main campus - many first year lectures are held here. Thankfully, the seats are among the most comfortable on campus. The Law School building includes a multi-storey glass bridge, forming an urban window between the city and the University. Throughout the building, breakout spaces, foyers and social areas enjoy the same views as the office space. The seven-storey facade consists of two layers of glass containing timber shutters which provide insulation and shade as well as complimenting the appearance of the nearby sandstone buildings.



### Stop 05

#### The Anderson Stuart Building

Formerly known as the "Old Medical School", it is a superb example of neo-gothic architecture. The building, carved out of beautiful golden Sydney sandstone - exhibits many gargoyles, superb stained glass windows and carvings. It was designed by James Barnet.



### Stop 06

#### Fisher library

The Fisher Library is where the students spend a large amount of time. Boasting over five million books, Fisher Library is one of many libraries in the University. Get lost in the stacks and find hundreds of really interesting books. If you can't find what you are looking for, ask one of the friendly staff to help you out.



### Stop 07

#### The Quadrangle

The design of the Quadrangle is a reflection of the tradition of the great British universities. The stained glass windows in the Great Hall include the Oxford, the Cambridge and the Royal windows; the stone carvings show images of Queen Victoria and the Prince Consort with the initials 'VR' along with the royal motto. The crown and the Tudor rose can also be found in some of the oldest sections of the Quadrangle. The Great Hall is used to host a variety of events, including graduation ceremonies. At the bottom right corner of the Main Quadrangle is the jacaranda tree. Rumour has it that if you haven't started studying for final exams before the tree flowers then you are in danger of failing. For most students, however, it is just a lovely place to lie on the grass and read. Occasionally, if you are lucky, somebody will be practicing the carillon up in the bell tower.



On your way out you might want to stop by the Nicholson Museum. The Museum's classical collection contains material from ancient Greece and Italy, and other parts of the Mediterranean influenced by those cultures. The Nicholson collection is one of the largest collections of European antiquities in Australia.



### Stop 08

#### The Sydney store

The Sydney Store is the University of Sydney Union's flagship store featuring a range of apparel and memorabilia to remember your time at the University of Sydney. Find all your uni merchandise in one place with t-shirts, hoodies, jackets, stationary, mugs, keyrings, bags plus much more.



### Stop 09

#### Graffiti tunnel

The Graffiti Tunnel is a legal graffiti wall running between the Holme Building and Manning House. It is the only site in the University where paint may be used. The university and campus security guards only request that the artwork is "clean" and that the door handles are left alone!

