



ICT Access Labs

Windows XP Wireless Printing

ACL003-0106

Document Description: Wireless printing Setup guide for Windows XP

For use by: Windows XP Wireless users in the ICT Access Labs

Quick Start:

Network Drive: <\\issserver.accesslabs.usyd.edu.au>[unikey]
Printers: <\\issserver.accesslabs.usyd.edu.au>[printer_name]

Index:

1. How to connect to a network drive
2. Network drive setup
3. How to setup your U: drive
4. How to add a network printer



ICT Access Labs

Windows XP Wireless Printing

ACL003-0106

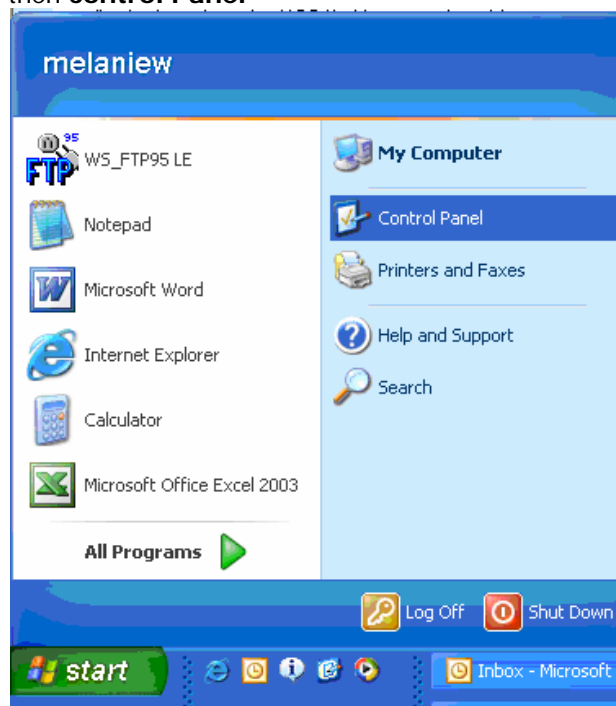
1 How to connect to my files on my Network Drive?

After you have configured your wireless setup, and have connected to the VPN, you should "map" your U: drive (network drive), in order to work on your files stored in this area.

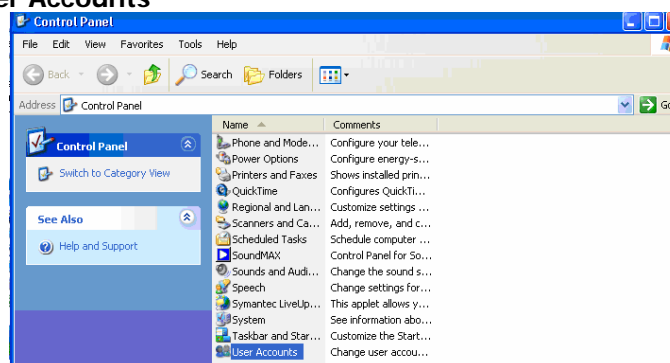
Note: Before you continue, you may need to create a user account on your computer, named with your Unikey, eg: abcd1234, in order to map your network drive, or use this account when connecting to the Sydney Uni Wireless (ie. Login using abcd1234). Hence to be able to map your network drive, you may need to make this new account (user abcd1234) a local administrator on your laptop.

2 Network Drive Setup

2.1. Click **Start** then **control Panel**



2.2. Click **User Accounts**



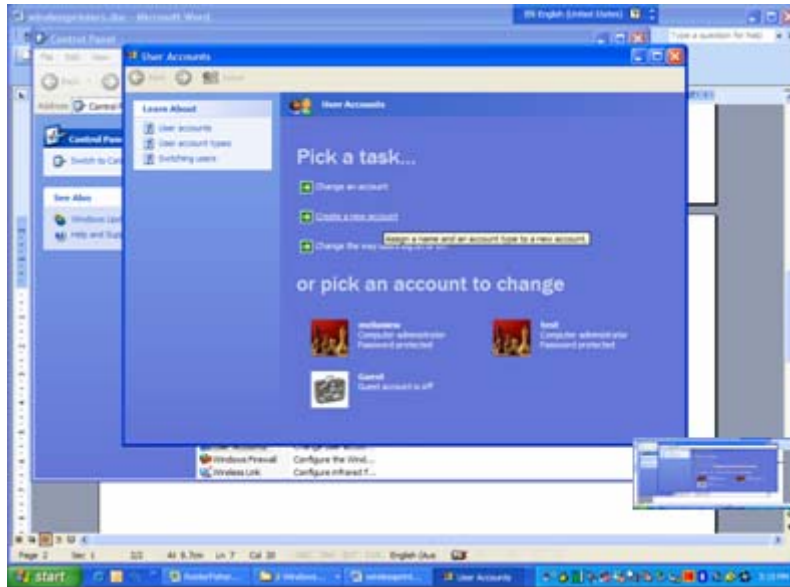
2.3. Enter your **Unikey**, then click **next**



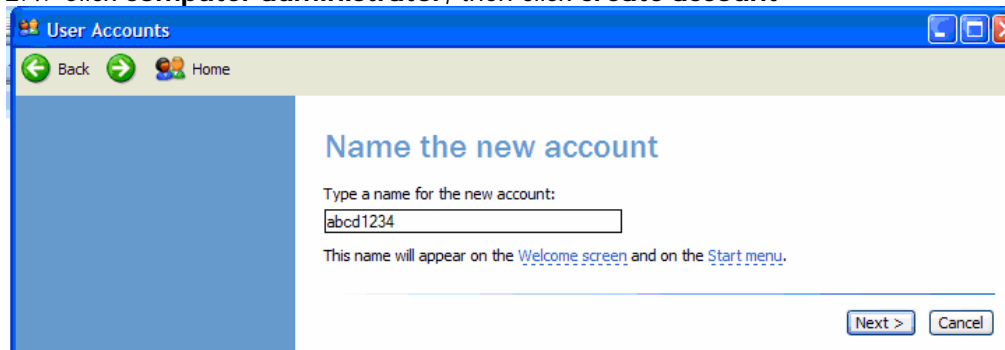
ICT Access Labs

Windows XP Wireless Printing

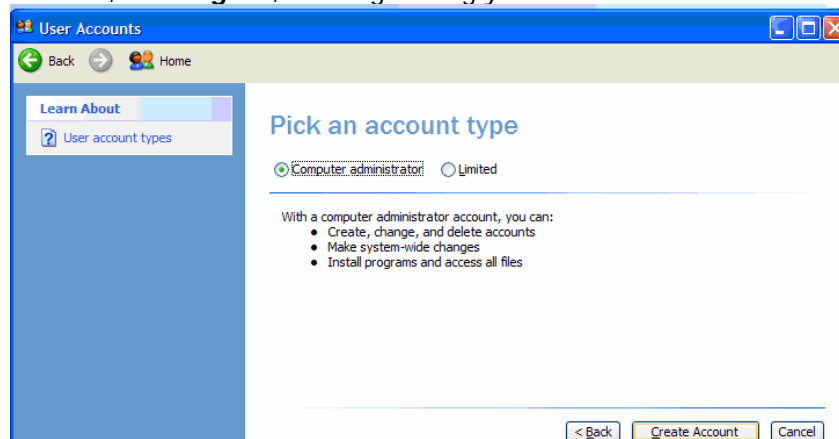
ACL003-0106



2.4. Click **computer administrator**, then click **create account**



2.5. Click **start**, then **log off**, then login using your new account.





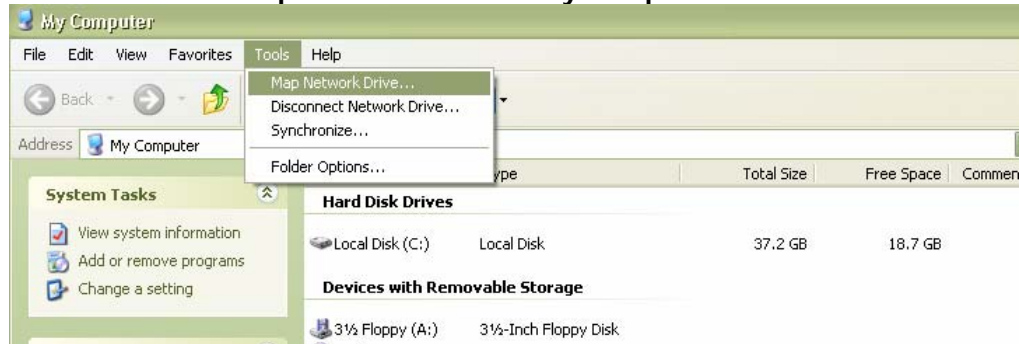
ICT Access Labs

Windows XP Wireless Printing

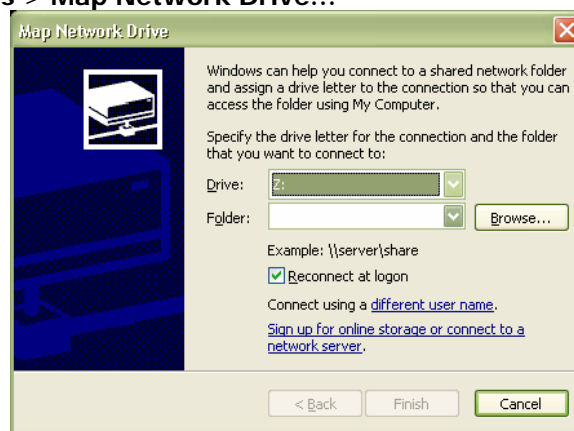
ACL003-0106

3 How to map your U: drive (Network Drive)

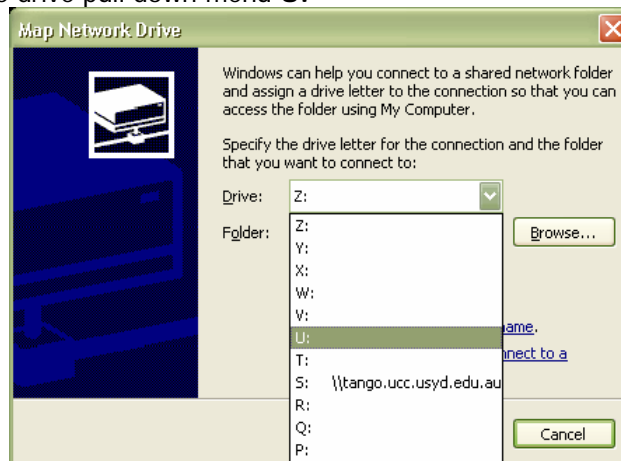
3.1. Go to the Desktop and double click on My Computer



3.2. Choose Tools > Map Network Drive...



3.3. Change the drive pull down menu U:



3.4. Then type in the Folder: [\\isserver.accesslabs.usyd.edu.au](http://isserver.accesslabs.usyd.edu.au) and then you username (Unikey). For example, [\\isserver.accesslabs.usyd.edu.au/abcd1234](http://isserver.accesslabs.usyd.edu.au/abcd1234)



ICT Access Labs

Windows XP Wireless Printing

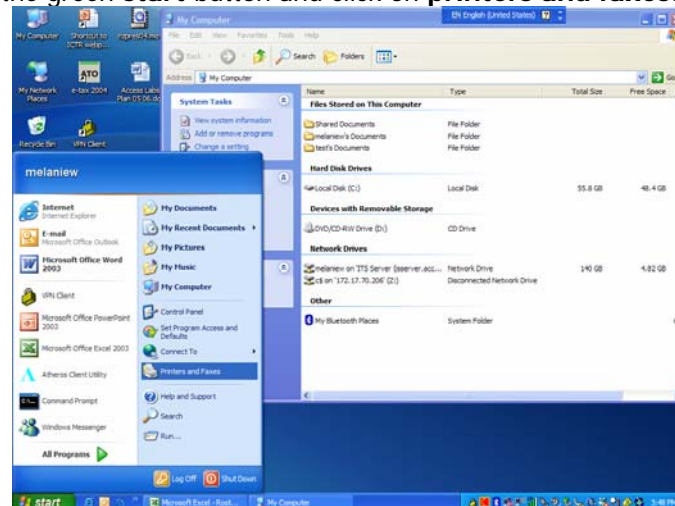
ACL003-0106



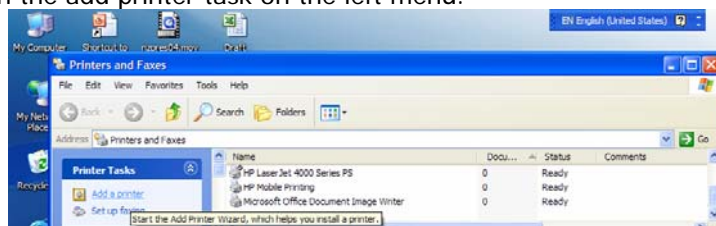
- 3.5. Tick the **"Reconnect at Logon"** button
- 3.6. Click finish button
- 3.7. Your network drive should now appear

- 4 **How to add a network printer, so I can print in the ICT Access Labs?**
Before you can continue, you need to have configured your wireless setup, have connected to the VPN client, and **you need to "map" your U: drive (Network Drive), in order to print from the Access Labs. Please follow the instructions on the previous pages for *Wireless Network Drive Access*.**

- 4.1. Click on the green **start** button and click on **printers and faxes**.



- 4.2. Click on the add printer task on the left menu.



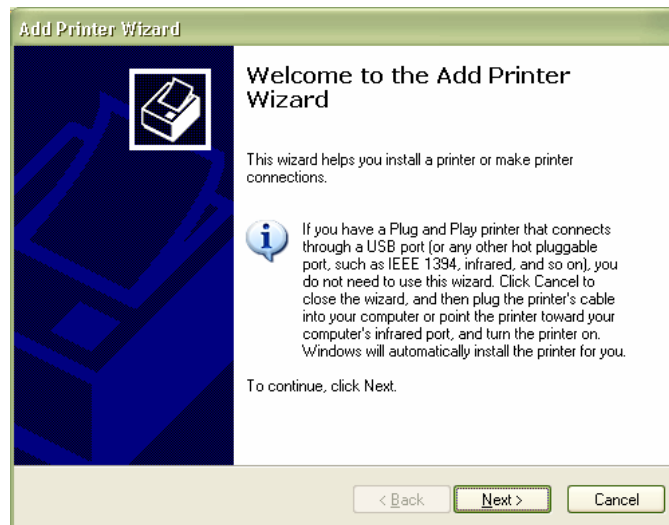


ICT Access Labs

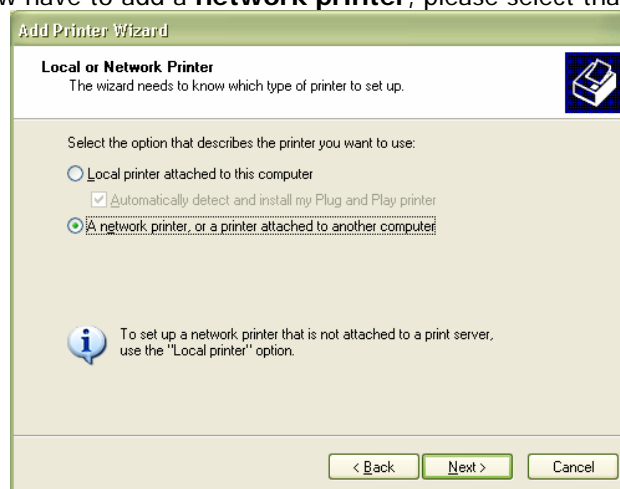
Windows XP Wireless Printing

ACL003-0106

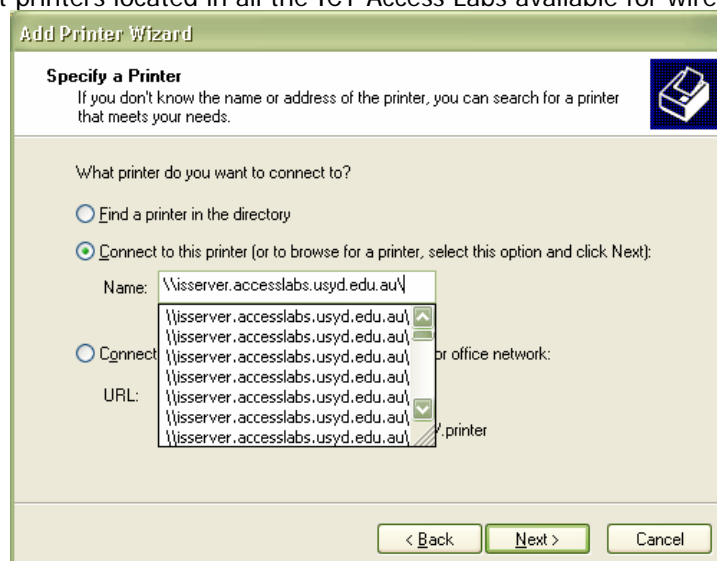
4.3. This will now open up the Add printer Wizard screen. We will get you to the select next



4.4. We will now have to add a **network printer**, please select that, and click **next**



4.5. The next page, you will be required to specify a path. Underneath is a list of all current printers located in all the ICT Access Labs available for wireless printing.





ICT Access Labs

Windows XP Wireless Printing

ACL003-0106

4.5.1. Fisher Access Lab

<\\isserver.accesslabs.usyd.edu.au\fisherlab2>
<\\isserver.accesslabs.usyd.edu.au\fisherlab3>
<\\isserver.accesslabs.usyd.edu.au\fishercoloura4>
<\\isserver.accesslabs.usyd.edu.au\fishercoloura3>

4.5.2. McGrath / Carslaw Access Lab

<\\isserver.accesslabs.usyd.edu.au\carslawlab1>
<\\isserver.accesslabs.usyd.edu.au\carslawlab2>

4.5.3. Education Access Lab

<\\isserver.accesslabs.usyd.edu.au\edulab1>

4.5.4. Language Access Lab

<\\isserver.accesslabs.usyd.edu.au\langlab1>

4.5.5. Pharmacy Access Lab

<\\isserver.accesslabs.usyd.edu.au\pharmlab1>

4.5.6. Link Access Lab

<\\isserver.accesslabs.usyd.edu.au\linklab2>

4.5.7. Law Access Lab

<\\isserver.accesslabs.usyd.edu.au\lawlab1>
<\\isserver.accesslabs.usyd.edu.au\lawlab2>
<\\isserver.accesslabs.usyd.edu.au\lawcolour>

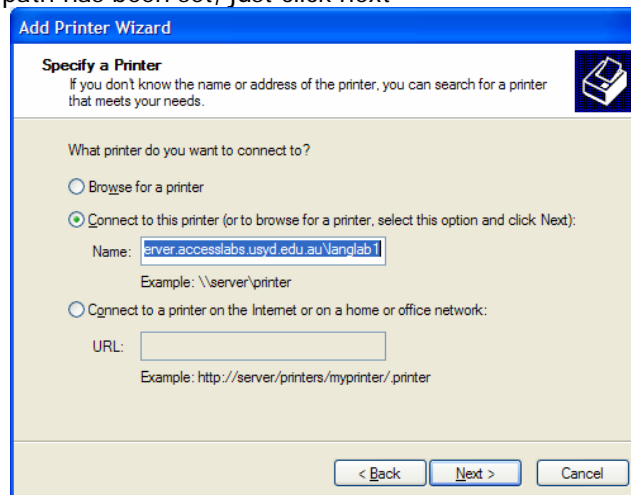
4.5.8. Cumberland Access lab

<\\isserver.accesslabs.usyd.edu.au\cumblab1>
<\\isserver.accesslabs.usyd.edu.au\cumblab2>
<\\isserver.accesslabs.usyd.edu.au\cumbcolour>

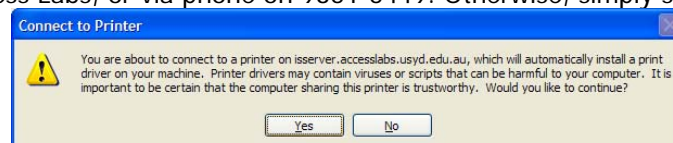
4.5.9. Conservatorium of Music Access Lab

<\\isserver.accesslabs.usyd.edu.au\conlab1>

4.6. When the path has been set, just click next



4.7. A message will appear similar to the one below. This is just saying that the system may not be protected. As a reassurance, we do have a very secure network. If you have any questions about this, please contact the ICT Access Labstaff in any of the ICT Access Labs, or via phone on 9351-5449. Otherwise, simply select OK



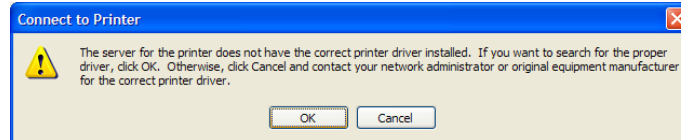


ICT Access Labs

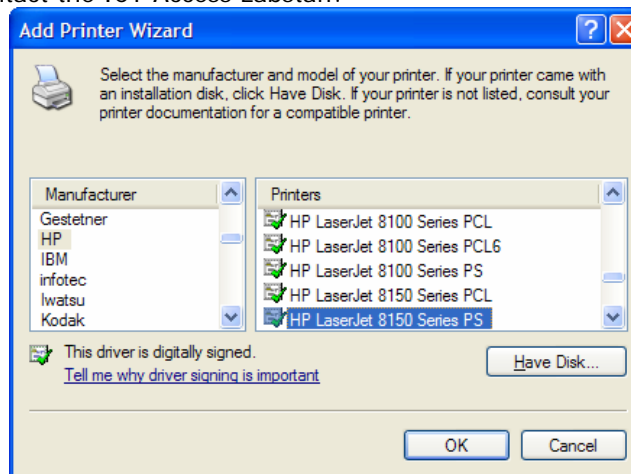
Windows XP Wireless Printing

ACL003-0106

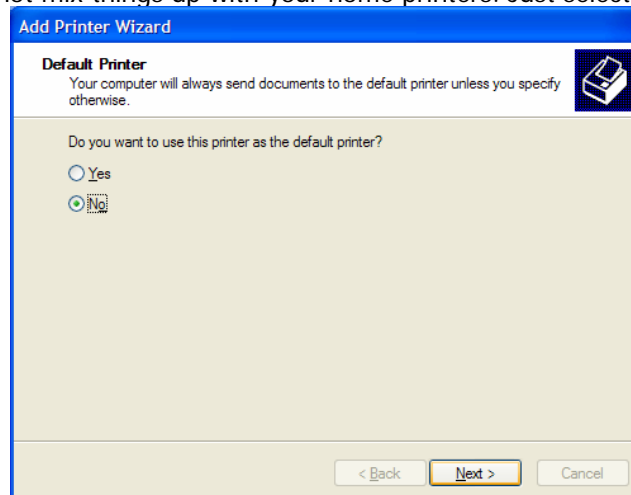
- 4.8. You will then get another message saying that you will be required to install drivers on your computer. Simply select OK. If there are any issues, please again contact the ICT Access labstaff on 9351-5449.



- 4.9. You will then be required to select your printer from the list. For an updated list of all printers in the ICT Access Labs, Please go to: <http://itassist.usyd.edu.au/student/services/labs/printing.shtml>. Once you have found the printer models, simply select OK. If you are having trouble finding this, please contact the ICT Access Labstaff.



- 4.10. After the drivers have been installed, you will be asked to either have the printer that you have installed set as the default printer. We would suggest no so that it will not mix things up with your home printers. Just select next.



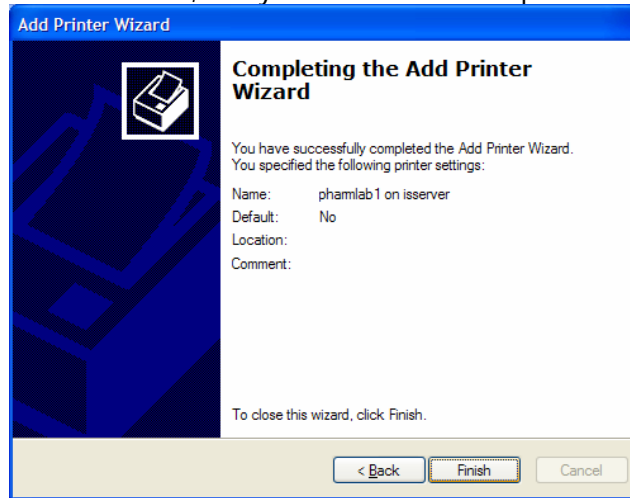


ICT Access Labs

Windows XP Wireless Printing

ACL003-0106

- 4.11. The final screen will say that the printers have been installed on your computer. Just select finish, and you should be able to print to this printer wirelessly.



If there are any further issues, please contact any of the ICT Access Labstaff at any of the ICT Access Labs, or contact the Fisher Access Lab on 9351-5449, or via email contact@labstaff.usyd.edu.au