



ICT Access Labs

Wireless Printing for Mac OSX

ACL004-0106

Document Description: Wireless Printing for Mac OSX

For use by: Wireless MAC OSX Users in the ICT Access Labs

Quick Start:

Network Drive: [smb://isserver.accesslabs.usyd.edu.au/\[unikey\]](smb://isserver.accesslabs.usyd.edu.au/[unikey])

Printer Drive: smb://Unikey_login:Unikey_password@isserver.accesslabs.usyd.edu.au/printer_name

Index:

1. Samba Mounting Introduction
2. Setup



ICT Access Labs

Wireless Printing for Mac OSX

ACL004-0106

1 Samba Mounting Introduction

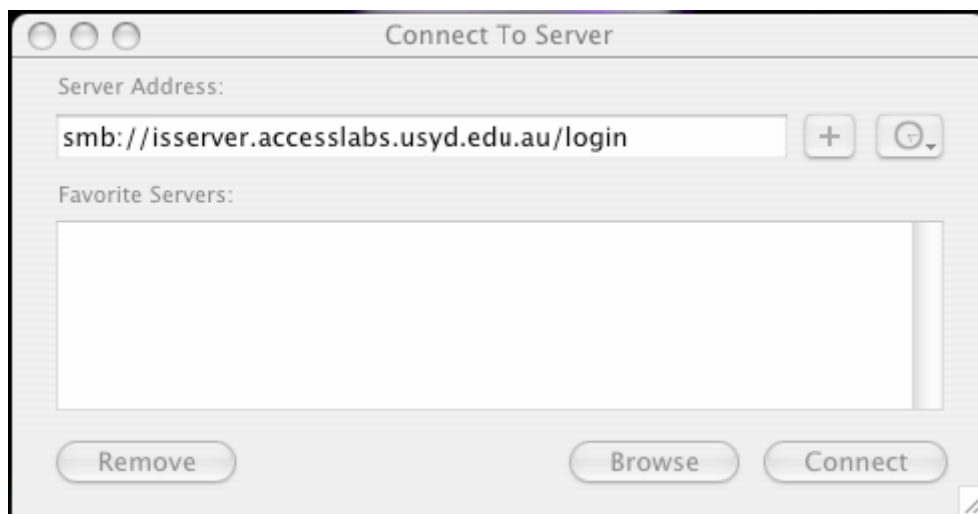
Your network drive must first be mounted across the network before you will be able to print wirelessly.

2 Setup

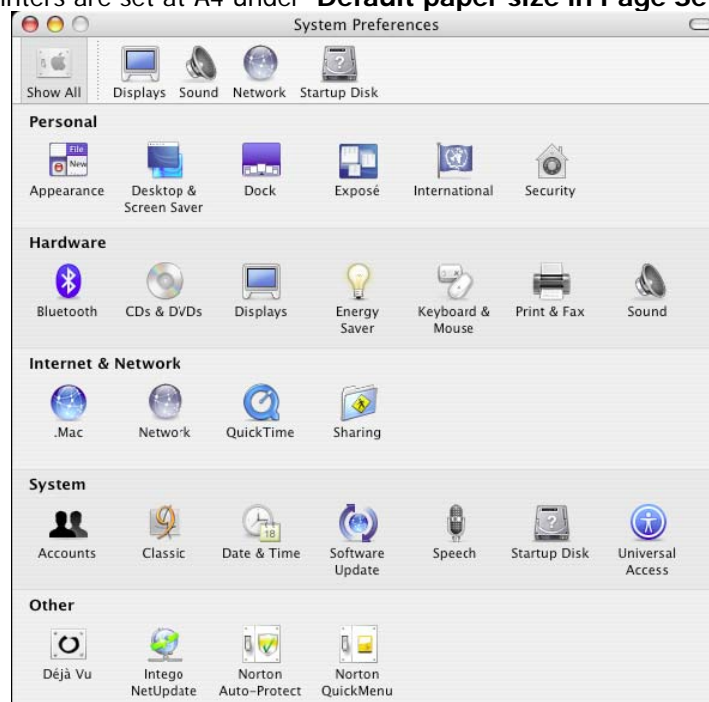
- 2.1. Click anywhere on the desktop, then from the **'GO'** menu, select to **'Connect to Server'**. Once the dialogue box appears, then enter the following in the **'Server Address'** field

<smb://isserver.accesslabs.usyd.edu.au/login>

(Please note that 'login' denotes your unikey login name)



- 2.2. To set up the printers, go to **'System preferences'**, and then to **'Print and Fax'**. Before you click on **Set up Printers'**, also make sure that the default paper size for all the printers are set at A4 under **'Default paper size in Page Setup'**.



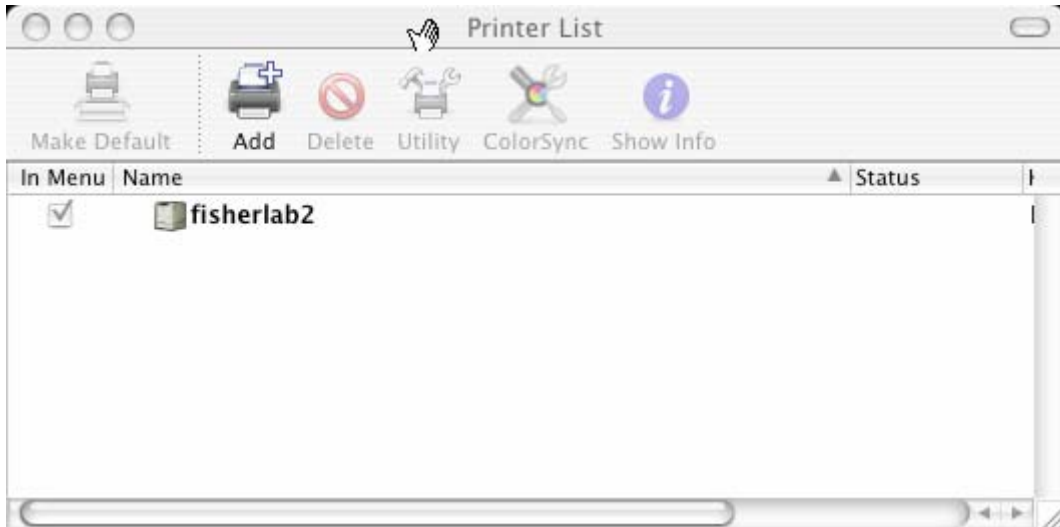


ICT Access Labs

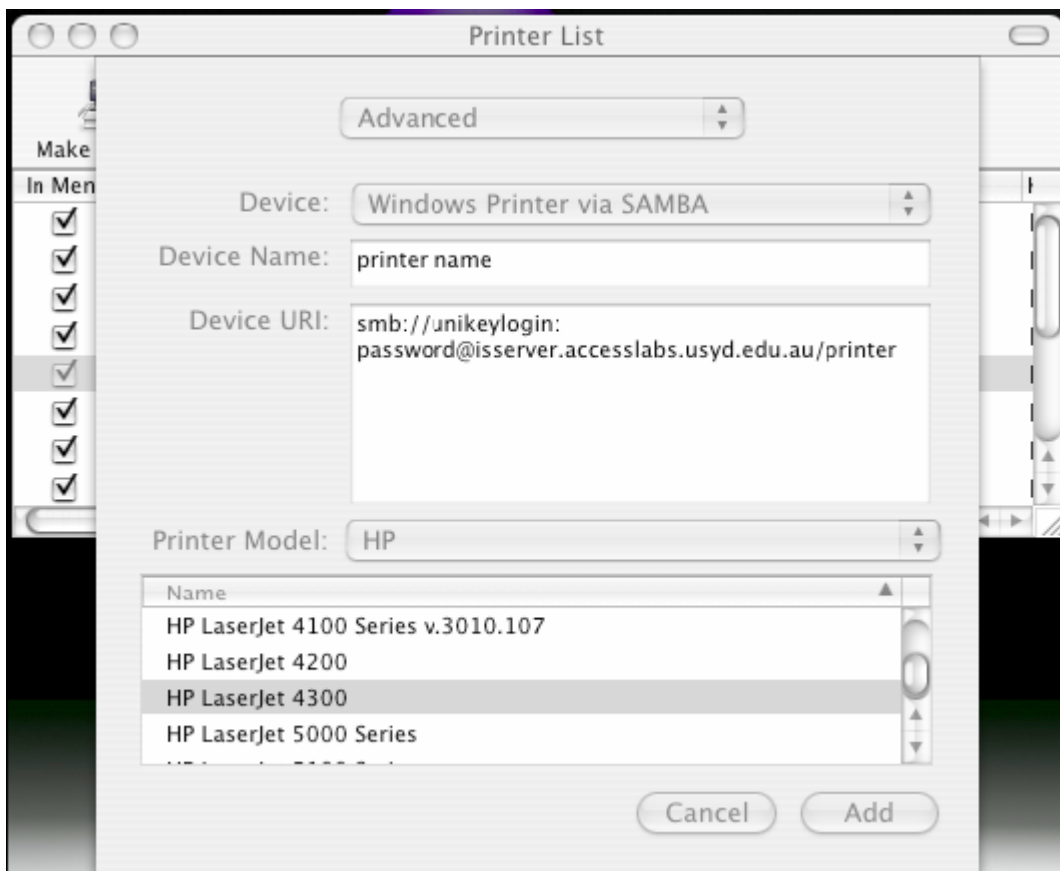
Wireless Printing for Mac OSX

ACL004-0106

- 2.3. Once the **'Printer Setup Utility'** is activated, hold down the **'Option'** key on your keyboard while clicking on the **'Add'** icon.



- 2.4. Select **'Advanced'** from the top most selection bar and as the **'Device'** select **'Windows Printer via Samba'**.





ICT Access Labs

Wireless Printing for Mac OSX

ACL004-0106

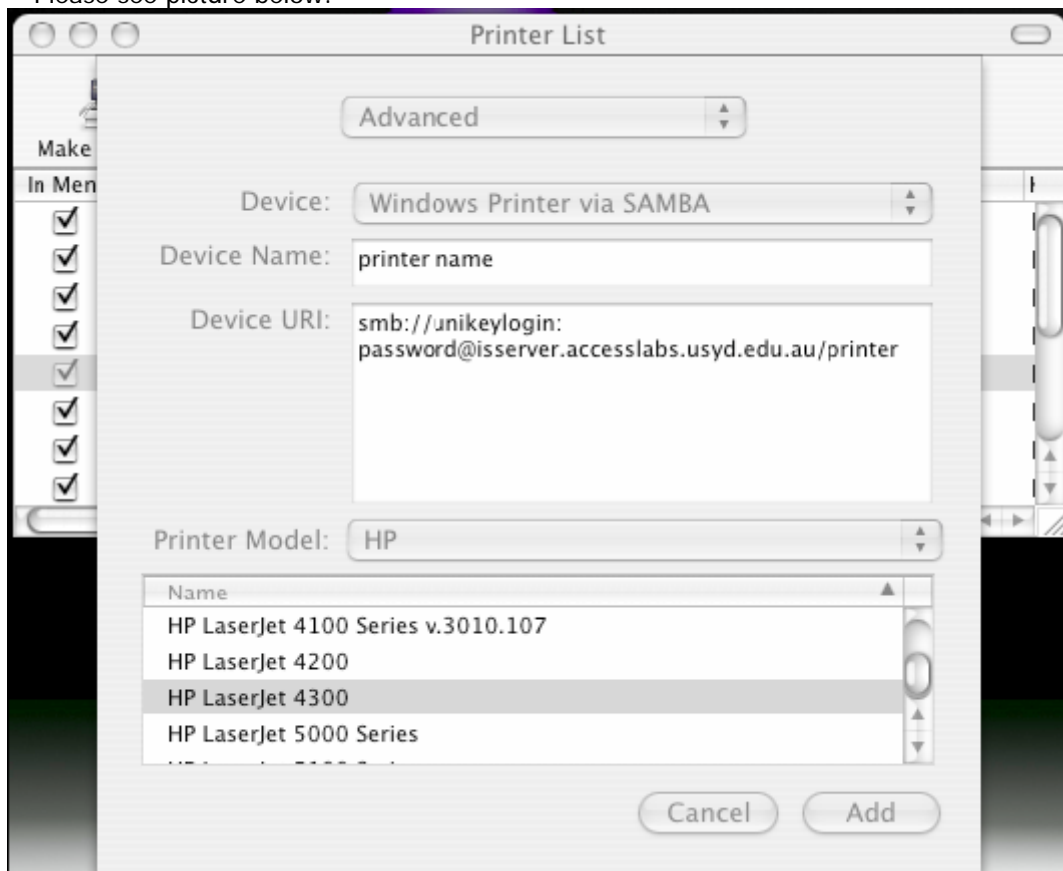
2.5. In the **'Device Name'** field, type in the printers name you are connecting to. For example fisherlab2 in the **'Device URL'** field type in the following:

smb://Unikey_login:Unikey_password@isserver.accesslabs.usyd.edu.au/printer name

So for example, if the login name is 'abcd1234' and the password is 'passwd', and you are attempting to connect to fisherlab2, this is what you will type:

smb://abcd1234:passwd@isserver.accesslabs.usyd.edu.au/fisherlab2

Please see picture below:



2.6. The last step is to select the appropriate "Printer Model". Simply select **"HP"** since all ICT Access Lab printers use HP printers, and then just specify the model of printer.

For a list of the printers, please see:

<http://itassist.usyd.edu.au/student/services/labs/printing.shtml>.

If you are finding difficulty with the setup of wireless printing, or accessing your USYD network drive, please contact any of the ICT Access Labstaff in any of the ICT Access Labs, or you can call on 9351-5449 or via email contact@labstaff.usyd.edu.au