



ICT Access Labs

Wireless Printing for Mac OSX - Tiger

Document Description: Wireless Printing for Mac OSX (Tiger)

For use by: Wireless MAC OSX Users in the ICT Access Labs

Quick Start:

Network Drive: [smb://isserver.accesslabs.usyd.edu.au/\[unikey\]](smb://isserver.accesslabs.usyd.edu.au/[unikey])

Printer Drive: smb://Unikey_login:Unikey_password@isserver.accesslabs.usyd.edu.au/printer_name

Index:

1. Samba Mounting Introduction
2. Setup



ICT Access Labs

Wireless Printing for Mac OSX - Tiger

1 Samba Mounting Introduction

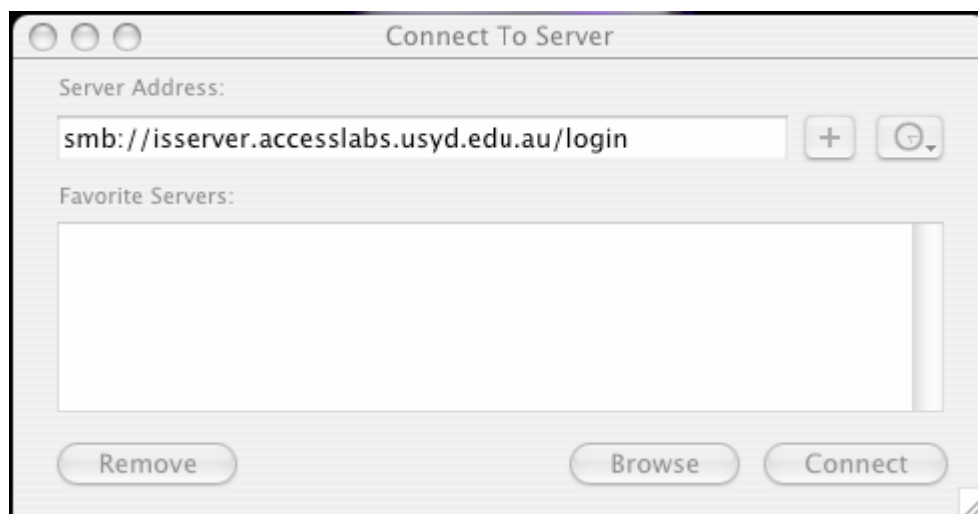
If you need to print files which have been saved on your UNIKEY account, please follow the steps below to mount your U:/ to gain access you your files.

2 Setup

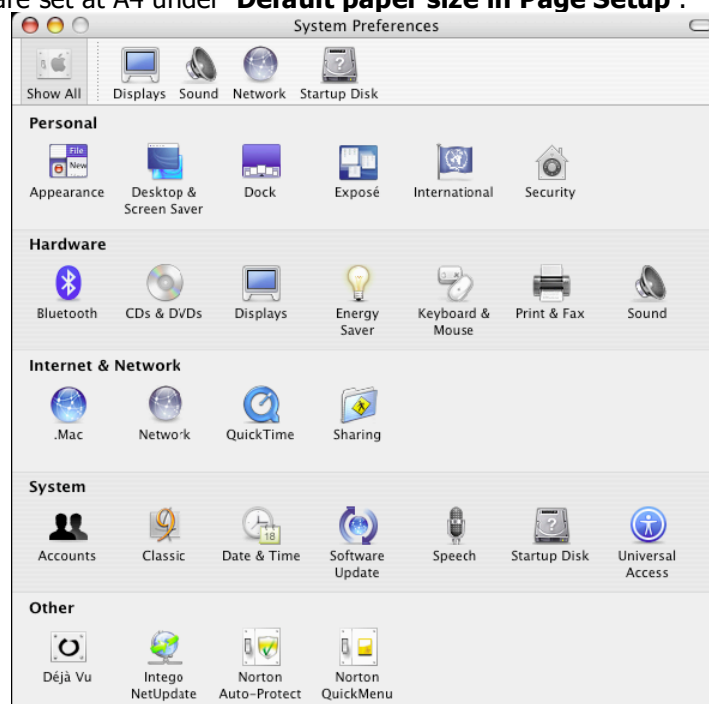
- 2.1. Click anywhere on the desktop, then from the 'GO' menu, select to 'Connect to Server'. Once the dialogue box appears, then enter the following in the 'Server Address' field

<smb://isserver.accesslabs.usyd.edu.au/login>

(Please note that 'login' denotes your unikey login name)



- 2.2. To set up the printers, open 'System preferences', and then to 'Print & Fax'. Before a new printer is set up, make sure that the default paper size for all the printers are set at A4 under 'Default paper size in Page Setup'.

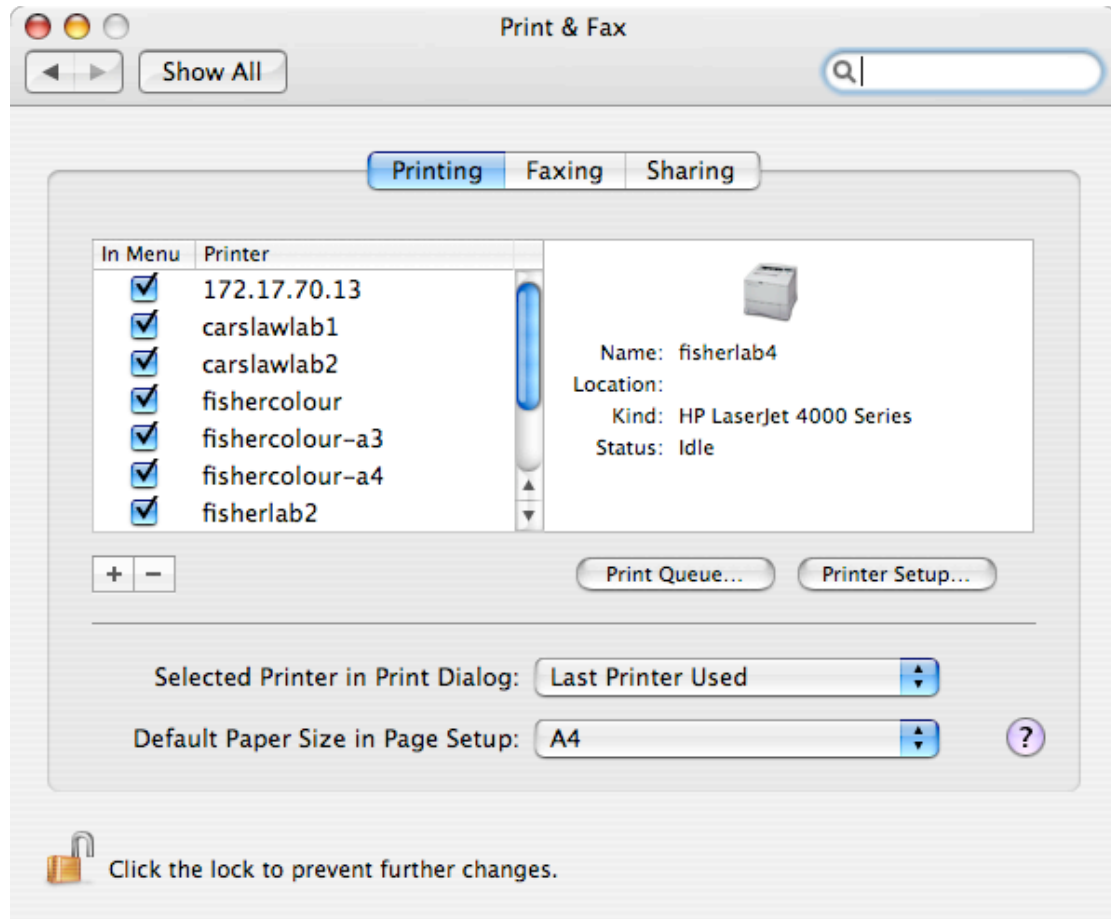




ICT Access Labs

Wireless Printing for Mac OSX - Tiger

Once A4 paper size is set, click on the "+" button to add new printers.

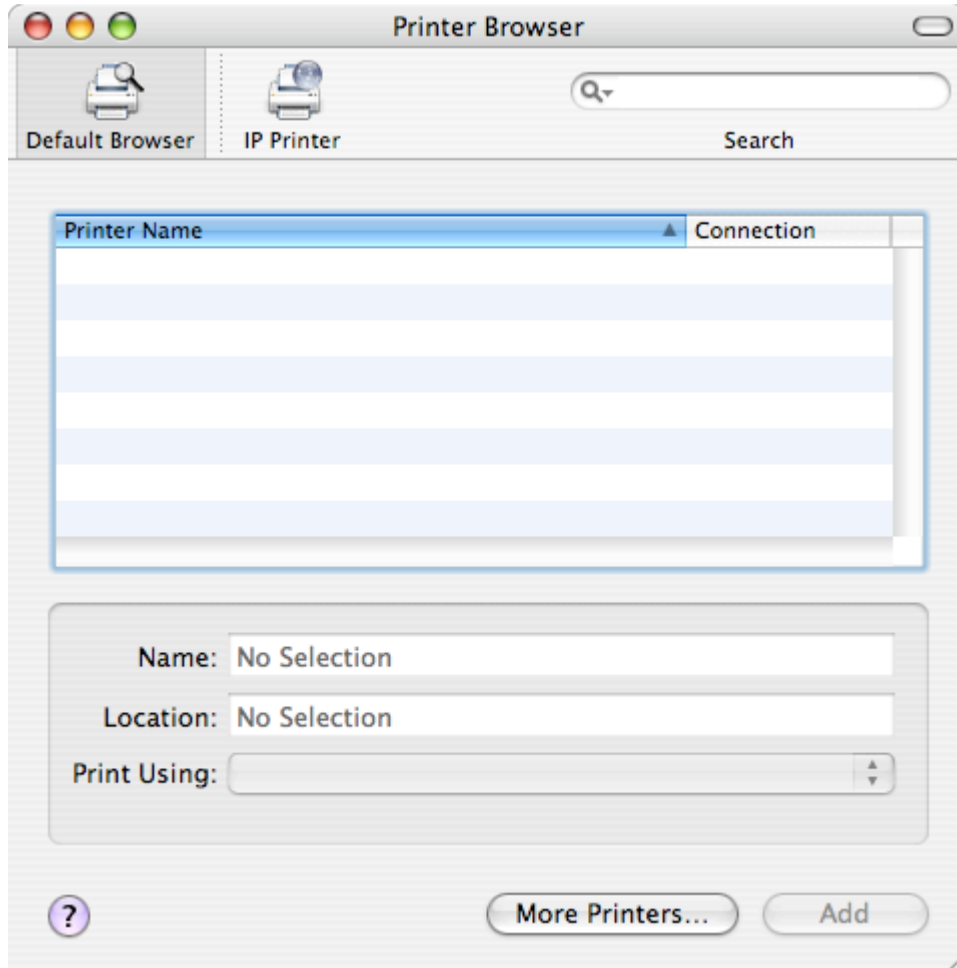




ICT Access Labs

Wireless Printing for Mac OSX - Tiger

2.3. A separate **"Printer Browser"** window will pop. Click on the **"More Printers..."** button WHILE holding down the **"Option"** key on your keyboard.





ICT Access Labs

Wireless Printing for Mac OSX - Tiger

- 2.4. Wait for the search for new drivers to complete, then at this new windows (see below), select **'Advanced'** from the top most selection bar and as the **'Device'** select **'Windows Printer via Samba'**.

Advanced

Device: Windows Printer via SAMBA

Device Name: printer name

Device URI: smb://unikeylogin:password@isserver.accesslabs.usyd.edu.au/printer

Printer Model: HP

Name
HP LaserJet 4300 Series
HP LaserJet 4345 MFP
HP LaserJet 4350
HP LaserJet 5000 Series

Cancel Add



ICT Access Labs

Wireless Printing for Mac OSX - Tiger

2.5. In the '**Device Name**' field, type in the printers name you are connecting to. For example fisherlab2 in the '**Device URI**' field type in the following:

smb://Unikey_login:Unikey_password@issserver.accesslabs.usyd.edu.au/printer name

So for example, if the login name is 'abcd1234' and the password is 'passwd', and you are attempting to connect to fisherlab2, this is what you will type:

smb://abcd1234:passwd@issserver.accesslabs.usyd.edu.au/fisherlab2

Please see picture below:

Advanced

Device: Windows Printer via SAMBA

Device Name: printer name

Device URI: smb://unikeylogin:password@issserver.accesslabs.usyd.edu.au/printer

Printer Model: HP

Name
HP LaserJet 4300 Series
HP LaserJet 4345 MFP
HP LaserJet 4350
HP LaserJet 5000 Series

Cancel Add

2.6. The last step is to select the appropriate "Printer Model". Simply select "HP" since all ICT Access Lab printers use HP printers, and then just specify the model of printer. For a list of the printers, please see:

<http://itassist.usyd.edu.au/student/services/labs/printing.shtml>.

If you are finding difficulty with the setup of wireless printing, or accessing your USYD network drive, please contact any of the ICT Access Labstaff in any of the ICT Access Labs, or you can call on 9351-5449 or via email contact@labstaff.usyd.edu.au