



# ICT Access Labs

## Wireless Printing for Mac OSX - Leopard

ACL009-0106

**Document Description:** Wireless Printing for Mac OSX (Leopard)

**For use by:** Wireless MAC OSX Users in the ICT Access Labs

**Quick Start:**

**Printer Drive:** <smb://isserver.accesslabs.usyd.edu.au/printername>

**Index:**

1. Setup Instructions



### 1 Setup Instructions

To set up the printers, open **'System preferences'**, and then to **'Print & Fax'**. Before a new printer is set up, make sure that the default paper size for all the printers are set at A4 under **'Default paper size in Page Setup'**. Once A4 paper size is set, click on the "+" button to add new printers.



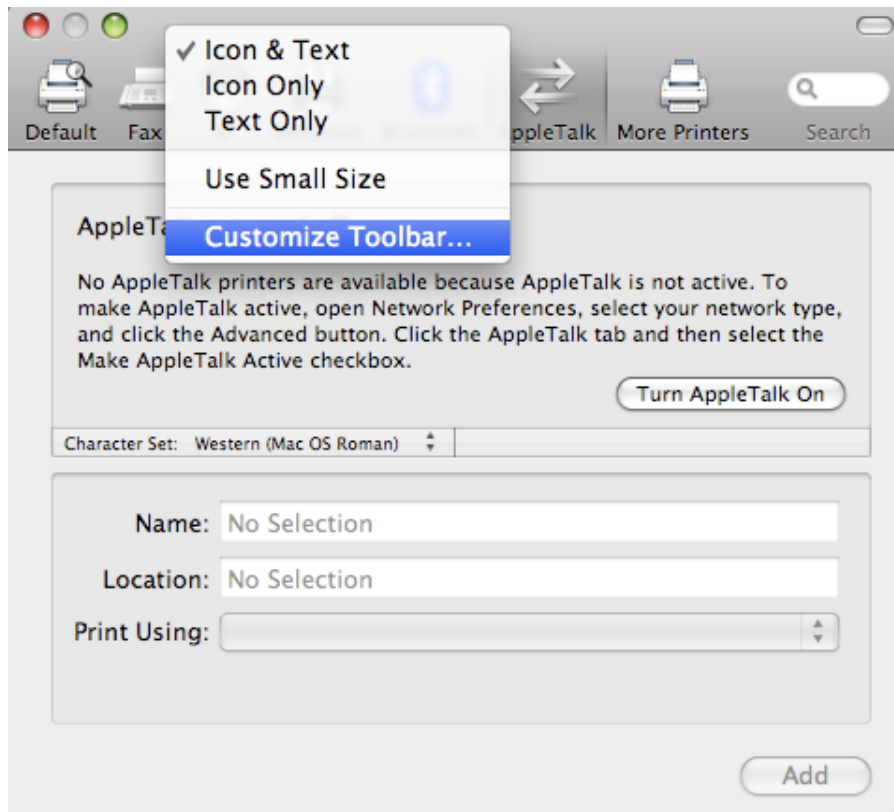
1.1. A separate window will pop as shown below. Right click on the top left hand side of this window near the green minimise button, then choose **"Customize Toolbar"**.



# ICT Access Labs

## Wireless Printing for Mac OSX - Leopard

ACL009-0106



1.2. Drag the **“Advanced”** menu item up to the toolbar as shown below.



1.3. Wait for a about 2-5 seconds, then choose **“Windows”** for the Type field and **“Another Device”** from the Device field.



# ICT Access Labs

## Wireless Printing for Mac OSX - Leopard

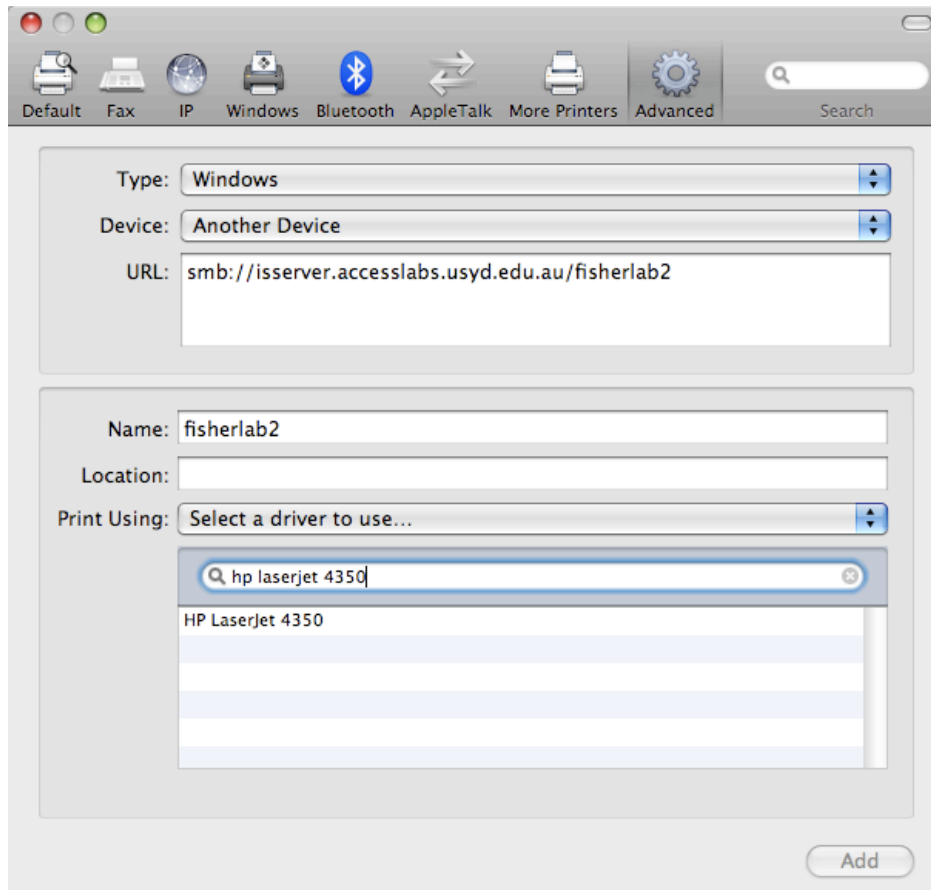
ACL009-0106

Type in the printer's name you are connecting to in the 'URL' field type with the following context:

smb://isserver.accesslabs.usyd.edu.au/printer name

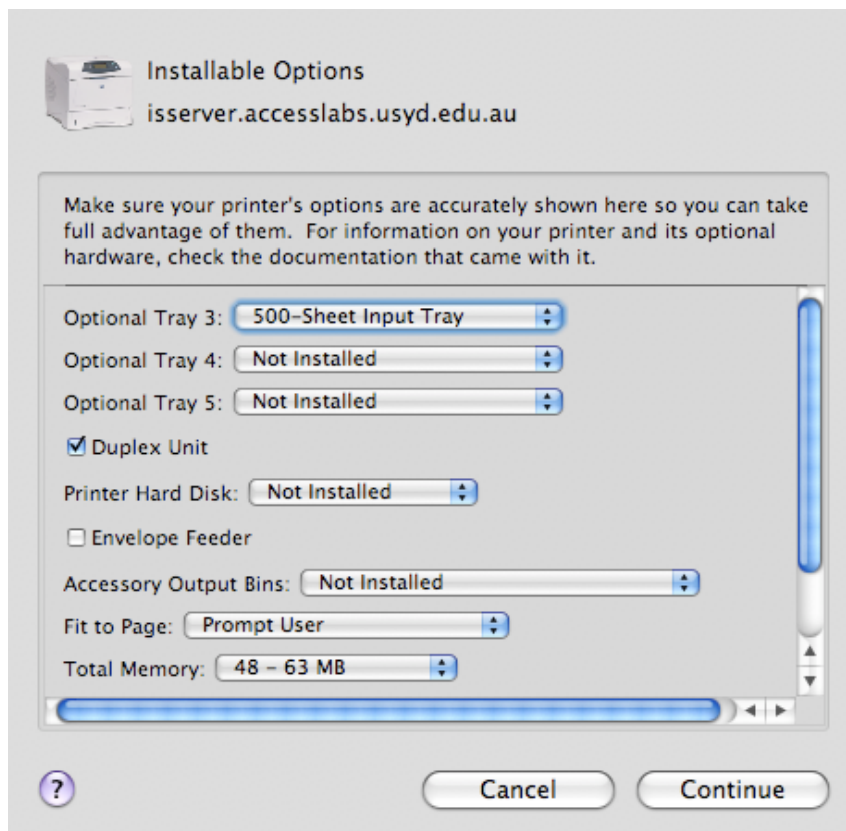
So for example, if and you are attempting to connect to fisherlab2, this is what you will type:

smb://isserver.accesslabs.usyd.edu.au/fisherlab2



- 1.4. Now select the appropriate printer model. Choose **"Select a driver to use"** from the Print Using field by searching for the appropriate black & white and colour printer models. For a list of the printers, please see: <http://itassist.usyd.edu.au/student/services/labs/printing.shtml>.

- 1.5. The last step is to choose the printer options. Enable Tray 3 with a **"500-Sheet Input Tray"** and tick the **"Duplex Unit"** box to enable double sided printing. These options apply evenly to all black & white and colour printer in the Access Labs.



- 1.6. Once the printer has been set up, every time you send a print request, ensure:
  - 1.6.1. The page size of your document is A4.
  - 1.6.2. Type in your unikey login and password when prompted to.

If you are finding difficulty with the setup of wireless printing, or accessing your USYD network drive, please contact any of the ICT Access Labstaff in any of the ICT Access Labs, or you can call on 9351-5449 or via email [contact@labstaff.usyd.edu.au](mailto:contact@labstaff.usyd.edu.au)