

## Case Studies:

### Public Health and Health Services



Professor Phyllis Butow in the School of Psychology leads a team awarded \$230,000 from the ARC to investigate the needs of cancer support group leaders. Social support plays a pivotal role in the psychological adjustment of people with cancer. Support groups provide unique input, but their outcomes are reliant on the quality and sustainability of the leaders. Internationally, little is known about the challenges and unmet needs of cancer support group leaders, or how to best support them. This study will clarify the needs of cancer group leaders, and design and evaluate two interventions (minimal and intense) to meet the needs of leaders. Outcomes will provide the evidence on which cancer organisations around the world can base interventions to sustain cancer support group leaders and thus hopefully improve psychological outcomes for cancer patients and their carers. The project includes an APAI scholarship.

Collaborating organisations for this project are the Cancer Council NSW and Westmead Hospital. Gillian Batt from the Cancer Council NSW says, "This collaboration with the University of Sydney is very exciting for the Cancer Council NSW. We already know that support groups play a key role in helping cancer patients and their families cope, and this sort of evidence-based input in supporting the group leaders will enhance that role even more."

### Chemistry and Oral Health

Professors Max Crossley (Chemistry) and Neil Hunter (Dentistry) and Dr Charles Collyer (Molecular Biology) have formed a multi-disciplinary team in collaboration with the Institute for Dental Research at Westmead Hospital to undertake exciting research in effective therapies for inflammatory disease of the gum tissue (periodontitis). They have discovered a novel mechanism of binding of a blood product by a unique receptor of a key pathogen implicated in this disease. By exploiting this knowledge an antibiotic was shown to have a selective effect on the target organism. Refinement of this complex has the potential to provide a clinically useful, selective agent. ARC funding of \$285,000 has been awarded over three years.



Professor Hunter from the Institute says, "ARC Linkage is a terrific scheme enabling researchers from the University and collaborating organisations to solve problems of mutual interest and benefit. The Institute and Westmead Hospital will work very closely with the University in undertaking the research and ensuring the outcomes are translated into practice as rapidly as possible."

### Humanities

Bestselling author Drusilla Modjeska (*Stravinsky's Lunch*) is currently leading the University of Sydney's innovative "From Thesis to Book" Linkage Project, which aims to transform a new generation of PhD graduates into commercially published non-fiction authors. The three-year project, worth over \$660,000, is the first successful industry partnership between a university (the University of Sydney) and a trade publisher (Picador Australia, the literary division of Pan Macmillan Australia). Dr Modjeska's leadership role has been made possible by funding of the first Linkage Industry Fellowship (LIF) to be awarded in the humanities and creative arts in Australia. The project is also funding six writing residencies for recent doctoral graduates to allow mentoring by established literary non-fiction writers, and an APAI scholarship for doctoral research into aspects of Australian non-fiction publishing.



Picador Publisher Nikki Christer says, "At Picador we constantly receive book proposals based on research theses, but we struggle to find non-fiction manuscripts with sales potential and high writing and research quality. This exciting project will address those issues and enable us to tap into a wealth of talent, and find new voices that we otherwise wouldn't have had access to."

### More information?

**Mr Warwick Dawson:** Director, Research Office,  
on +61 2 9351 4472 or at [wadawson@usyd.edu.au](mailto:wadawson@usyd.edu.au).

**Ms Merrilee Robb:** Director of Research Development,  
on +61 2 9351 6756 or at [mrobb@mail.usyd.edu.au](mailto:mrobb@mail.usyd.edu.au).

**ARC website:** [www.arc.gov.au/grant\\_programs/linkage\\_projects.htm](http://www.arc.gov.au/grant_programs/linkage_projects.htm)



## The University of Sydney

The University of Sydney. CRICOS Provider Number 00026A

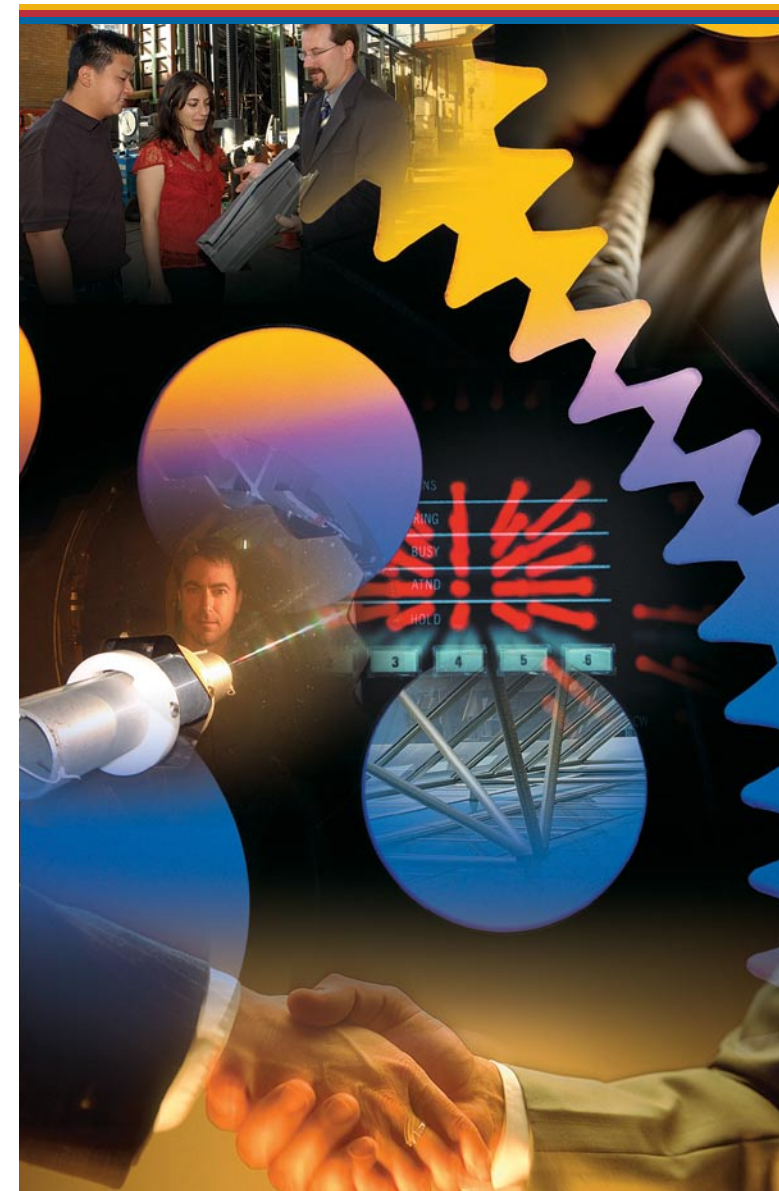
This brochure was produced by the Publications Office of the University of Sydney from information gathered in September 2005 for use in 2006.

Printed by Heaneys



## The University of Sydney Research Collaborations with Industry and the Community

### ARC Linkage Projects at the University of Sydney



# Research Collaborations with Industry and the Community

## What is a Linkage Project?

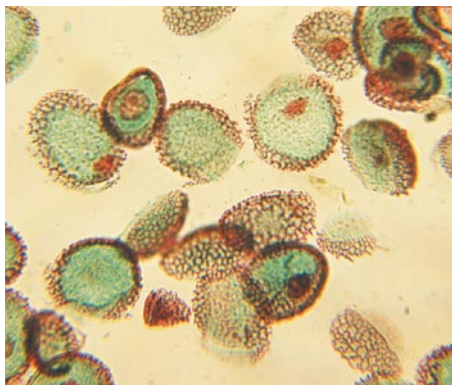
A Linkage Project is a research project primarily funded by the ARC and jointly initiated and undertaken by the University and a collaborating organisation to achieve outcomes of strategic importance to the collaborator, as well as economic, social or cultural benefit to the wider Australian community.

## What can I apply for?

Support is available for the costs associated with undertaking the research, including salaries for personnel, equipment, maintenance and travel. There are some specific items that can be requested:

- Australian Postgraduate Awards Industry (APAI): stipends for postgraduate research students studying towards a Master's (two years) or PhD award (3.5 years);
- Australian Postdoctoral Fellowships Industry (APDI): salary for researchers with less than three years' postdoctoral experience (APDI duration is three years);
- Linkage Industry Fellowships (up to one year) for salary costs associated with short-term transfers between organisations for university or collaborator researchers.

Support is not available for clinical medical and dental research and training, contract research or consultancies, data compilation or existing projects previously funded by the Commonwealth under an ARC scheme or via the CRC program.



## When do I apply and how much funding can I apply for?

There is no longer a maximum request but it would be unusual to seek more than \$500,000 per annum for up to five years, depending on the ambition and scale of the proposed project. The minimum request is \$20,000 per annum. The average grant awarded by the ARC is \$100,000 per annum, for three to five years.

Two application rounds are held annually – in early May and late November (internal University closing dates are mid April and early November) for funding to commence in the following January or July respectively.

## What are the benefits of participating in Linkage Projects?

- The research focuses on solving a problem for the collaborator that will result in it gaining strategic benefits and competitive advantage
- Access to ARC research funding – up to five times the amount of the cash contribution by the collaborator
- Collaboration with the University of Sydney and access to expertise and leading-edge facilities and infrastructure
- Potential eligibility for tax concessions
- Being associated with a leading national research funding scheme designed to benefit the broader Australian community

## What constitutes a 'collaborating organisation'?

Almost all public, private, community, government and non-profit organisations are eligible collaborators, provided they are not primarily funded for research or research-related activities from government sources. The following organisations and types of organisation are not eligible: universities, rural R&D boards, CRCs, DSTO, ANSTO and CSIRO.

Overseas organisations may also be included as collaborators, though it is preferable to include an Australian based organisation as well, to ensure project outcomes will be of economic or social benefit to Australia, and used in Australia.

The University currently has Linkage Projects with a range of collaborators, including the Autism Association of NSW, BHP Billiton Innovation Pty Ltd, Singtel Optus Pty Ltd, Glaxo SmithKline, Sydney City Council, NSW Department of Education and Training, Royal Prince Alfred Hospital, and the State Art Gallery.

## What is required from the collaborating organisation?

Because the aim of the scheme is to achieve outcomes of strategic importance to the collaborating organisation, Linkage Projects are jointly initiated and undertaken by collaborator and University-based researchers. As well, the ARC requires from the collaborator a cash contribution (funds to the University) and an in-kind contribution (usually in the form of time committed by the collaborator's personnel or other non-monetary resources), which must at least match the total cash funding requested from the ARC. Where a project is seeking (on average) \$50,000 or more per year from the ARC, the combined minimum contribution in cash should be 20 per cent of the total amount sought from the ARC. The total contribution from the collaborating organisation must be specific to the project and not part of a broader contribution to the University.

Where a project seeks support for an APAI student, the collaborating organisation must contribute a minimum of \$6000 in cash and a further \$6000 in cash or in-kind (that is, \$12,000 in total) for each year the student is to receive a stipend.

Collaborating organisations undertaking research in sciences and technology may apply for concessional tax treatment for contributions to a Linkage Project.

A signed agreement between the University and the collaborator regarding cash and in-kind contributions and management of intellectual property is required prior to commencement of funded projects.

## How are applications assessed?

Applications are assessed against the following criteria:

- track record of the named investigators relative to opportunity (20 per cent)
- commitment from collaborating organisation (25 per cent)
- significance and innovation of the proposed project (25 per cent)
- approach and training (20 per cent), and
- national benefit (10 per cent).

